

# **Corporation of the Township of Chisholm**

*Municipal Office/Council Chambers: 2847 Chiswick Line, Powassan, Ont. P0H 1Z0*

*Phone (705) 724-3526 - Fax (705) 724-5099 [info@chisholm.ca](mailto:info@chisholm.ca)*

## **ADDITION TO AGENDA**

**COUNCIL MEETING TUESDAY, JANUARY 27, 2026 7:00 PM**

### **11. NEW BUSINESS**

(d) Consultation for updates to the Source Protection Plan. (Encl.)

# Source Protection Plan: Policy Updates

**January 26, 2026**

To: Township of Chisholm

From: Jason Trottier, Chair,  
North Bay-Mattawa Source Protection Committee

Re: Notice of Source Protection Plan Revisions

---

Dear Mayor, Council, Clerk & Staff of the Township of Chisholm:

The North Bay-Mattawa Source Protection Committee has been undertaking a detailed review of the Source Protection Plan and Assessment Report for the North Bay-Mattawa Source Protection Area. This letter serves as a notice that draft proposed Source Protection Plan updates are now being circulated to the Township of Chisholm for your review and comment. Comments may be submitted to the Source Protection Committee by email at [dwsp@nbmca.ca](mailto:dwsp@nbmca.ca) or to the Conservation Authority mailing address below by end of day on March 1, 2026.

Copies of the draft proposed versions of the Source Protection Plan and Assessment Report are available for download at:  
<https://nbmca.ca/watershed-management/drinking-water-source-protection/>

The most substantial changes in this revised edition are the intake protection zone mapping has been updated to reflect updated watercourse and wetland mapping data and the policies are now reflective of the 2021 version of the Technical Rules and Tables of Drinking Water Threats. The revised boundary for the Callander IPZ-ICA may result in additional residents being included in the On-site Sewage System Mandatory Maintenance Inspection program.

This notice includes a table highlighting the policies that have been added, revised, or removed as relevant to the Township of Chisholm in the Callander Issue Contributing Area (IPZ-ICA) and the broader Highly Vulnerable Aquifer (HVA).

The North Bay-Mattawa Conservation Authority will be hosting meetings for municipal staff and Source Protection Authority board members for a detailed review of the changes. All property owners within the Callander IPZ-ICA are receiving notices of public consultation.

Staff and SPA members from the Township of Chisholm are welcome to attend any of the following meetings:

- February 4, 1:30 p.m. to 3:30 p.m. at the Callander Community Centre, 1984 Swale Street, Callander
- February 19, 10 a.m. to 12 p.m. Virtual Teams Meeting:  
<https://teams.microsoft.com/meet/27687510099697?p=YNSeerPJwj1wM42WTv> Meeting ID: 276 875 100 996 97 Passcode: ta9kv2ay

The North Bay-Mattawa Source Protection Committee specifically requests your feedback on the proposed mapping, new policies, and other updates to the Source Protection Plan.

## Comments

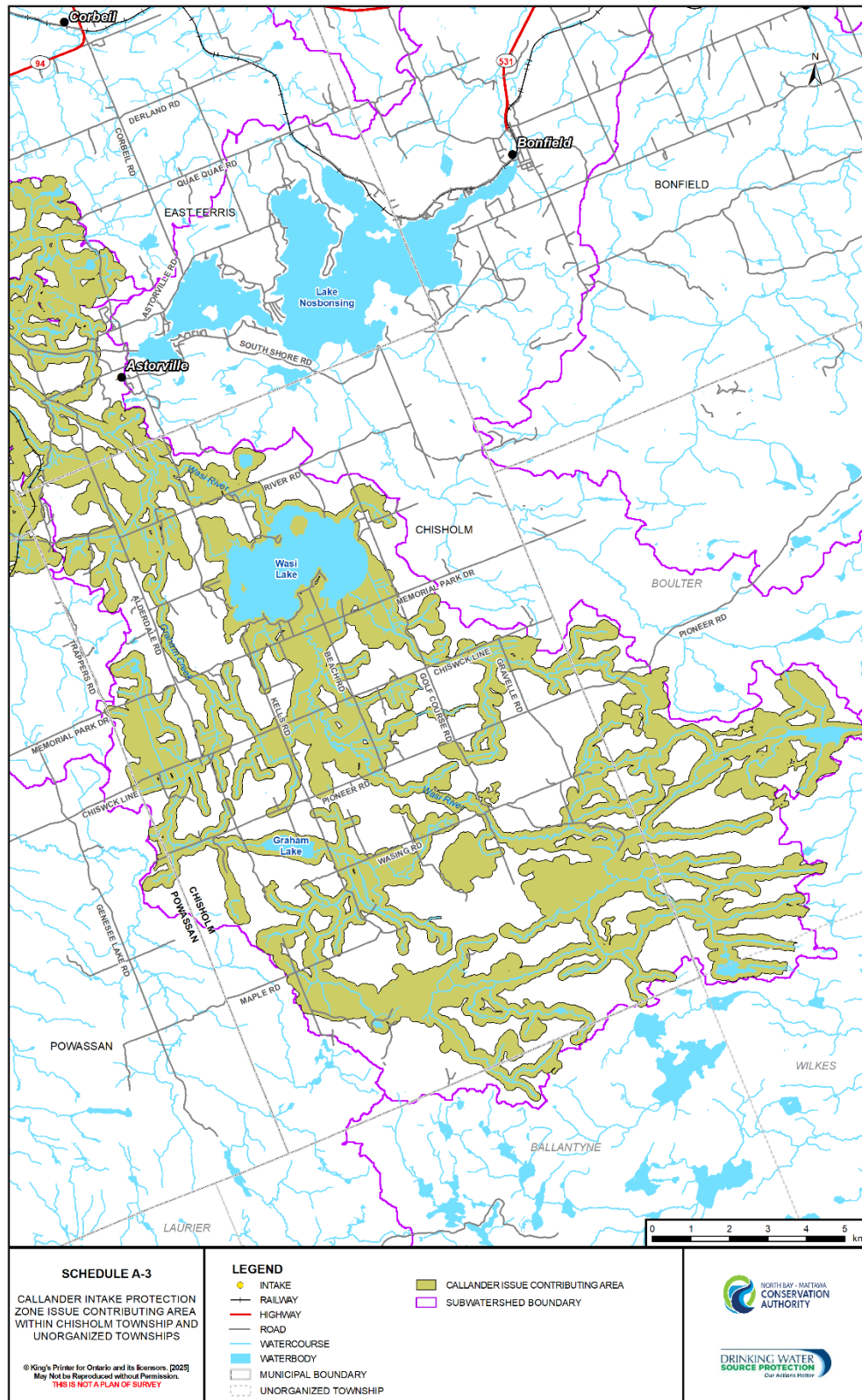
Written comments should be submitted by **March 1, 2026**, and may be directed to:

Jason Trottier, SPC Chair  
North Bay-Mattawa Source Protection Committee  
c/o North Bay-Mattawa Conservation Authority  
15 Janey Avenue, North Bay, ON P1C 1N1  
Fax: 705-474-9793  
Email: [dwsp@nbmca.ca](mailto:dwsp@nbmca.ca)

## Questions

If you have questions about the policies or updates, please contact:

DWSP Staff (Liza Vandermeer and Angela Mills)  
North Bay-Mattawa Conservation Authority  
Office (705) 474-5420  
[dwsp@nbmca.ca](mailto:dwsp@nbmca.ca)



Schedule A-3 of the Source Protection Plan: Callander Intake Protection Zone Issue Contributing Area in Chisholm and Unorganized Townships



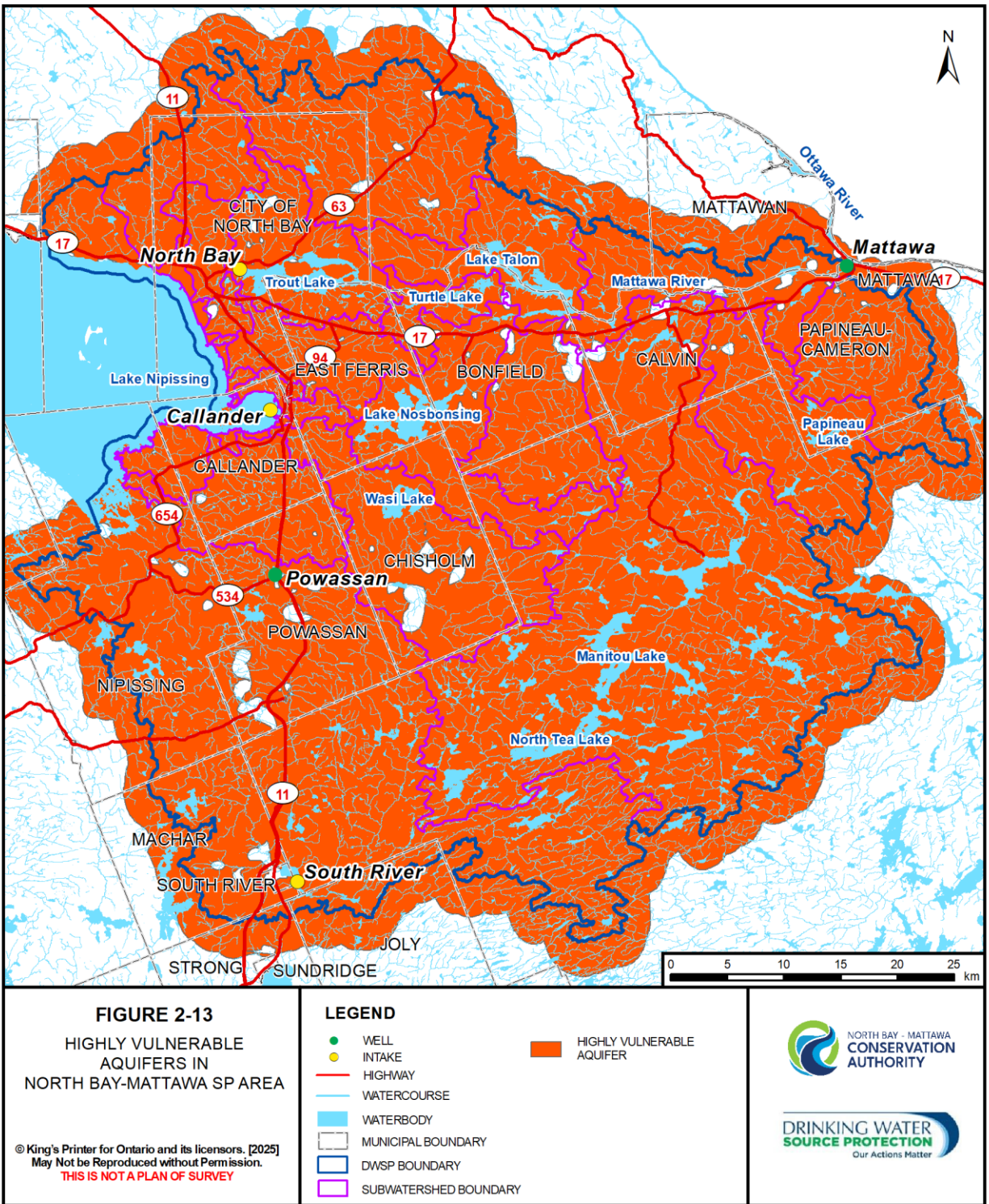


Figure 2-13 of the Assessment Report: Highly Vulnerable Aquifers

Table of notable policy changes relevant to the Township of Chisholm

<b>Policy</b>	<b>Vulnerable Area</b>	<b>Description of Policy changes</b>
AIR1. Glycol Management Plans	N/A	Policy removed under O.Reg 287/07 section 31 where a policy is not required if the activity has never been engaged in and there is no reasonable prospect that the activity will ever be engaged in in an area where it would be a significant drinking water threat.
ICA1. Education: Issue Contributing Area	Callander IPZ-ICA	Revised policy with changes to the list of activities specified to be included in the Education and Outreach program.
ICA2. <i>Nutrient Management Act</i> Tools to implement Phosphorus Best Management in the Issue Contributing Area	Callander IPZ-ICA	Revised Policy with changes to the list of activities to have conditions specified when a Nutrient Management Plan, Nutrient Management Strategy and/or Non-Agricultural Source Material Plan is required.
ICA3. Governing Research in the Issue Contributing Area	Callander IPZ-ICA	Revised policy with changes to the list of research outcomes
PIP1. Pipeline Planning to Consider Source Water	HVA	New policy to address new prescribed threat of Liquid Hydrocarbon Pipelines (none exist in the Source Protection Area)
PIP2. Pipeline Design, Operation, and Maintenance	HVA	New policy to address new prescribed threat of Liquid Hydrocarbon Pipelines (none exist in the Source Protection Area)
PIP3. Pipeline Notification	HVA	New policy to address new prescribed threat of Liquid Hydrocarbon Pipelines (none exist in the Source Protection Area)

<b>Policy</b>	<b>Vulnerable Area</b>	<b>Description of Policy changes</b>
PIP4. Pipeline Technical Work Costs	HVA	New policy to address new prescribed threat of Liquid Hydrocarbon Pipelines (none exist in the Source Protection Area)
PIP5. Education: Liquid Hydrocarbon Pipeline	HVA	New policy to address new prescribed threat of Liquid Hydrocarbon Pipelines (none exist in the Source Protection Area)
PIP6. Mapping for Pipeline Emergency Planning	HVA	New policy to address new prescribed threat of Liquid Hydrocarbon Pipelines (none exist in the Source Protection Area)
SAL1. Salt Management Plan	HVA	New policy addressing the significant threat of application of road salt. Where the threat is an existing moderate or low threat municipalities should have a salt management plan in place. The former SAL1. Land Use Prohibition – Road Salt Storage policy has been removed as the volume threshold for significant threat is now as little as 20 kg.
SEW1. Prescribed Instruments: Prohibition of New Sewage Works and Review of Existing Sewage Works of Certain Types	Callander IPZ-ICA	Revised policy with changes to activities listed
SEW2. Prescribed Instruments: Management of Sewage Works of Certain Types	Callander IPZ-ICA	Revised policy with changes to activities listed

<b>Policy</b>	<b>Vulnerable Area</b>	<b>Description of Policy changes</b>
SMF4. Education: Management of ASM and Livestock Grazing Activity	Callander IPZ-ICA	New policy addressing the agriculturally based activities that were removed from former SMF1. Municipal Action: Prohibit Land Application of Nutrients
TPW1. Provide Notice of Transport Pathway	Callander IPZ-3	New Policy
WDS1. Prohibition and Management of Waste Disposal Sites under Part V of the EPA	Callander IPZ-ICA	Revised policy with changes to activities listed
WDS2. Land Use Prohibition: Waste Disposal Sites	Callander IPZ-ICA	Revised policy with changes to activities listed

## **Notice of Public Consultation On Proposed Source Protection Plan and Assessment Report Updates**

**Deadline for comments: March 1, 2026 at 11:59 p.m.**

---

On behalf of the North Bay-Mattawa Source Protection Committee and Authority, please be advised of the proposed updates to the Source Protection Plan and Assessment Report for the North Bay-Mattawa Source Protection Area. This Notice is being posted for public consultation and circulated to municipalities, ministries and other implementing bodies as required under the *Clean Water Act, 2006*. The proposed updates are prepared as per section 36 of the *Clean Water Act, 2006* and the 2021 Technical Rules. Comments may be submitted to the North Bay-Mattawa Source Protection Committee by email at [dwsp@nbmca.ca](mailto:dwsp@nbmca.ca).

The Source Protection Plan contains policies that help protect municipal source of drinking water. The Assessment Report contains the technical studies that support the policies. The proposed Source Protection Plan and Assessment Report and maps are available at:  
<https://actforcleanwater.ca/public-consultations-reports/source-protection-plan/>

The most substantial changes in this revised edition are the intake protection zone mapping has been updated to reflect updated watercourse and wetland mapping data and the policies are now reflective of the 2021 version of the Technical Rules and Tables of Drinking Water Threats. The revised boundary for the Callander IPZ-ICA may result in additional residents being included in the On-site Sewage System Mandatory Maintenance Inspection program.

### **Comments**

Written comments should be submitted by **March 1, 2026 at 11:59 p.m.**, and may be directed to:

Jason Trottier, Chair  
North Bay-Mattawa Source Protection Committee  
c/o North Bay-Mattawa Conservation Authority  
15 Janey Avenue, North Bay, ON P1C 1N1  
**Email:** [dwsp@nbmca.ca](mailto:dwsp@nbmca.ca)  
Fax: 705-474-9793

**Summary of key updates to the Assessment Report:**

- Updated watershed monitoring data under watershed characterization.
- Applied the 2021 Technical Rules and Tables of Drinking Water Quality Threats to technical work including:
  - update of impervious surface area maps (which in turn help identify and assess threat activities such as the application of road salt)
  - use of revised terminology Intake Protection Zone (IPZ)-Issue Contributing Area (ICA) for the Callander municipal drinking water source
  - update to background details for threat activities
  - update to numbers of existing threat activity counts and circumstances.
- Updated the Callander IPZ-1, IPZ-2, and IPZ-ICA and North Bay IPZ-2 map to reflect Technical Rule guidance and updated wetlands and watercourse delineation data.

**Summary of key updates to the Source Protection Plan:**

- Applied the 2021 Technical Rules and Tables of Drinking Water Quality Threats including an updated list of prescribed threats, applicable threat subcategories, and vulnerable areas.
- New and revised policies capture changes to the Technical Rules and are outlined in the table below.

<b>Policy</b>	<b>Vulnerable Area</b>	<b>Description of Policy changes</b>
AIR1. Glycol Management Plans	N/A	Policy removed under O.Reg 287/07 section 31 where a policy is not required if the activity has never been engaged in and there is no reasonable prospect that the activity will ever be engaged in in an area where it would be a significant drinking water threat.
FUL1. Land Use Prohibition: Handling and Storage of Fuel	Callander IPZ-1, Mattawa WHPA-A, WHPA-B, Powassan WHPA-A, WHPA-B, South River IPZ-1	Revised policy removing reference to specific circumstances and now applies to Callander IPZ-1 and South River IPZ-1
FUL2. Management of Threat as a Condition of Other Approvals: Handling and Storage of Fuel	Callander IPZ-1, Mattawa WHPA-A, WHPA-B, Powassan WHPA-A, WHPA-B, South River IPZ-1	Policy now applies to Callander IPZ-1 and South River IPZ-1
FUL3. Maintenance of Safety Information for Public by TSSA	Callander IPZ-1, Mattawa WHPA-A, WHPA-B, Powassan WHPA-A, WHPA-B, South River IPZ-1	Policy now applies to Callander IPZ-1 and South River IPZ-1
FUL4. Education: Handling and Storage of Fuel	Callander IPZ-1, Mattawa WHPA-A, WHPA-B, Powassan WHPA-A, WHPA-B, South River IPZ-1	Revised policy removing reference to specific circumstances and now applies to Callander IPZ-1 and South River IPZ-1
HAZ1. Land Use Screening: DNAPLs	Callander IPZ-1, Mattawa WHPA-A, WHPA-B, Powassan WHPA-A, WHPA-B, South River IPZ-1	New Policy
HAZ2. Land Use Screening: Organic Solvents	Mattawa WHPA-A, WHPA-B Powassan WHPA-A, WHPA-B	New Policy



<b>Policy</b>	<b>Vulnerable Area</b>	<b>Description of Policy changes</b>
HAZ3. Education: DNAPLs	Callander IPZ-1, Mattawa WHPA-A, WHPA-B, Powassan WHPA-A, WHPA-B, South River IPZ-1	Revised policy. Former HAZ.1 Education DNAPLs and Organic Solvents policy has been renumbered and Organic Solvents content removed (See HAZ4). This policy now applies to Callander IPZ-1 and South River IPZ-1
HAZ4. Education: Organic Solvents	Mattawa WHPA-A, WHPA-B, Powassan WHPA-A, WHPA-B	Revised Policy. Former HAZ.1 Education DNAPLs and Organic Solvents policy has been renumbered and separated into two policies (see HAZ3.)
ICA1. Education: Issue Contributing Area	Callander IPZ-ICA	Revised policy with changes to the list of activities specified to be included in the Education and Outreach program.
ICA2. <i>Nutrient Management Act</i> Tools to implement Phosphorus Best Management in the Issue Contributing Area	Callander IPZ-ICA	Revised Policy with changes to the list of activities to have conditions specified when a Nutrient Management Plan, Nutrient Management Strategy and/or Non-Agricultural Source Material Plan is required.
ICA3. Governing Research in the Issue Contributing Area	Callander IPZ-ICA	Revised policy with changes to the list of research outcomes
LAU1. Education: Threat Activities in Laurier Township	South River IPZ-1 in Laurier Township only	Revised policy with changes to activities listed; NBMCA to implement Education and Outreach for the three properties in the IPZ-1 in Laurier.
MAT1. Management of Threats in the Municipality of Mattawan	Mattawa WHPA-C in Municipality of Mattawan only	Revised policy with changes to the activities listed.

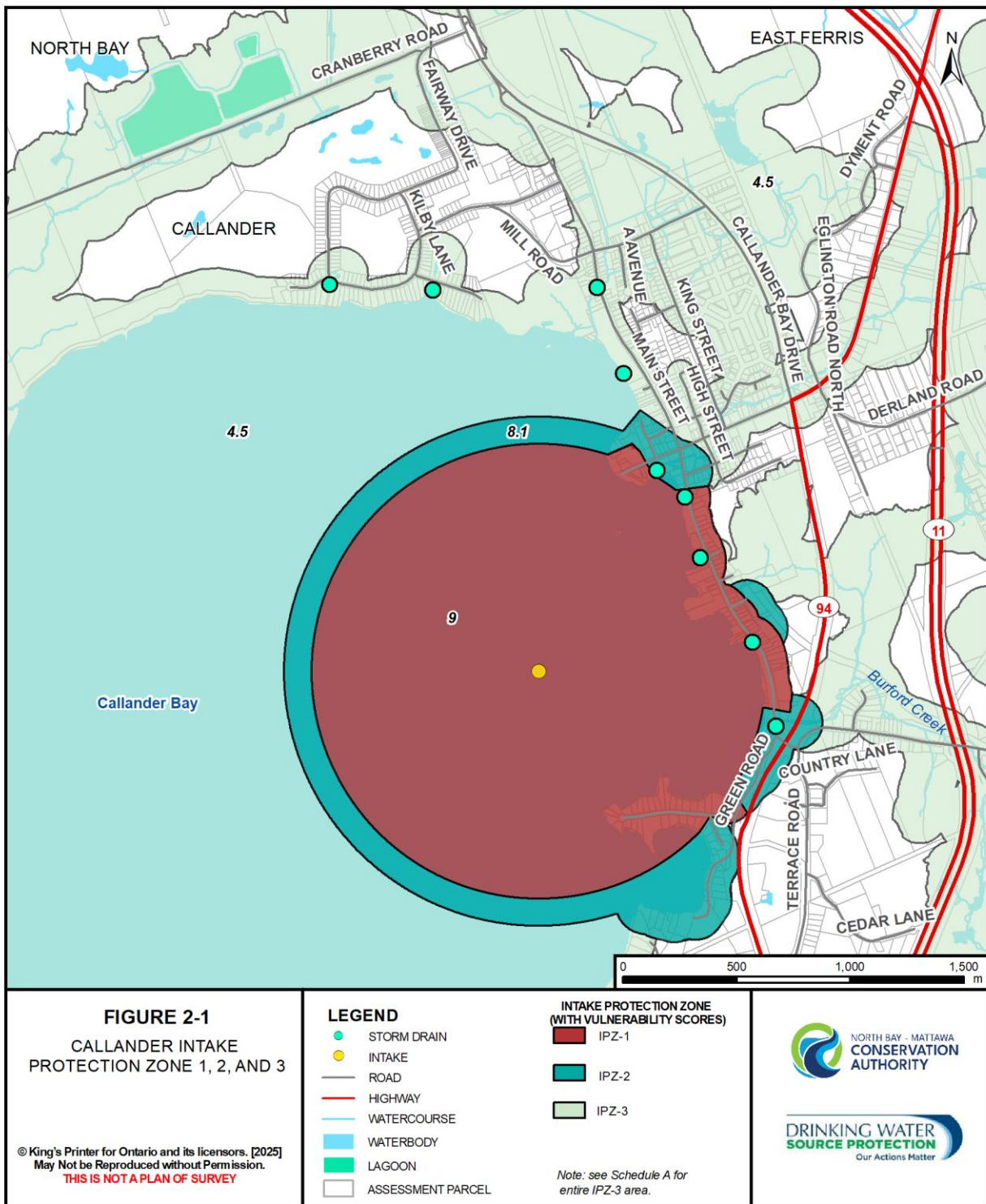
<b>Policy</b>	<b>Vulnerable Area</b>	<b>Description of Policy changes</b>
PIP1. Pipeline Planning to Consider Source Water	Callander IPZ-1, IPZ-2, IPZ-3, Mattawa, WHPA-A, WHPA-B, WHPA-C, WHPA-D, Powassan WHPA-A, WHPA-B, WHPA-C, WHPA-D, South River IPZ-1, IPZ-3, Highly Vulnerable Aquifer (HVA)	New policy to address new prescribed threat of Liquid Hydrocarbon Pipelines (none exist in the Source Protection Area)
PIP2. Pipeline Design, Operation, and Maintenance	Callander IPZ-1, IPZ-2, IPZ-3, Mattawa, WHPA-A, WHPA-B, WHPA-C, WHPA-D, Powassan WHPA-A, WHPA-B, WHPA-C, WHPA-D, South River IPZ-1, IPZ-3, HVA	New policy to address new prescribed threat of Liquid Hydrocarbon Pipelines (none exist in the Source Protection Area)
PIP3. Pipeline Notification	Callander IPZ-1, IPZ-2, IPZ-3, Mattawa, WHPA-A, WHPA-B, WHPA-C, WHPA-D, Powassan WHPA-A, WHPA-B, WHPA-C, WHPA-D, South River IPZ-1, IPZ-3, HVA	New policy to address new prescribed threat of Liquid Hydrocarbon Pipelines (none exist in the Source Protection Area)
PIP4. Pipeline Technical Work Costs	Callander IPZ-1, IPZ-2, IPZ-3, Mattawa, WHPA-A, WHPA-B, WHPA-C, WHPA-D, Powassan WHPA-A, WHPA-B, WHPA-C, WHPA-D, South River IPZ-1, IPZ-3, HVA	New policy to address new prescribed threat of Liquid Hydrocarbon Pipelines (none exist in the Source Protection Area)

<b>Policy</b>	<b>Vulnerable Area</b>	<b>Description of Policy changes</b>
PIP5. Education: Liquid Hydrocarbon Pipeline	Callander IPZ-1, IPZ-2, IPZ-3, Mattawa, WHPA-A, WHPA-B, WHPA-C, WHPA-D, Powassan WHPA-A, WHPA-B, WHPA-C, WHPA-D, South River IPZ-1, IPZ-3, HVA	New policy to address new prescribed threat of Liquid Hydrocarbon Pipelines (none exist in the Source Protection Area)
PIP6. Mapping for Pipeline Emergency Planning	Callander IPZ-1, IPZ-2, IPZ-3, Mattawa, WHPA-A, WHPA-B, WHPA-C, WHPA-D, Powassan WHPA-A, WHPA-B, WHPA-C, WHPA-D, South River IPZ-1, IPZ-3, HVA	New policy to address new prescribed threat of Liquid Hydrocarbon Pipelines (none exist in the Source Protection Area)
PST2. Land Use Prohibition: Pesticide Handling and Storage	Callander IPZ-1, Mattawa WHPA-A, WHPA-B, Powassan WHPA-A, WHPA-B, South River IPZ-1	Revised policy, adding handling to existing activity of storage of pesticides.
PST3. Municipal Pesticide Management Plan	Callander IPZ-1, IPZ-2	Revised policy, adding handling to existing activities of application and storage of pesticides.
SAL1. Salt Management Plan	Moderate or Low Threat: Callander IPZ-1, IPZ-2, Mattawa WHPA-A, WHPA-B, WHPA-C, WHPA-D, North Bay IPZ-1, IPZ-2 Powassan WHPA-A, WHPA-B, WHPA-C, WHPA-D, South River IPZ-1, HVA	New policy addressing the significant threat of application of road salt. Where the threat is an existing moderate or low threat municipalities should have a salt management plan in place. The former SAL.1 Land Use Prohibition – Road Salt Storage policy has been removed as the volume threshold for significant threat is now as little as 20 kg.

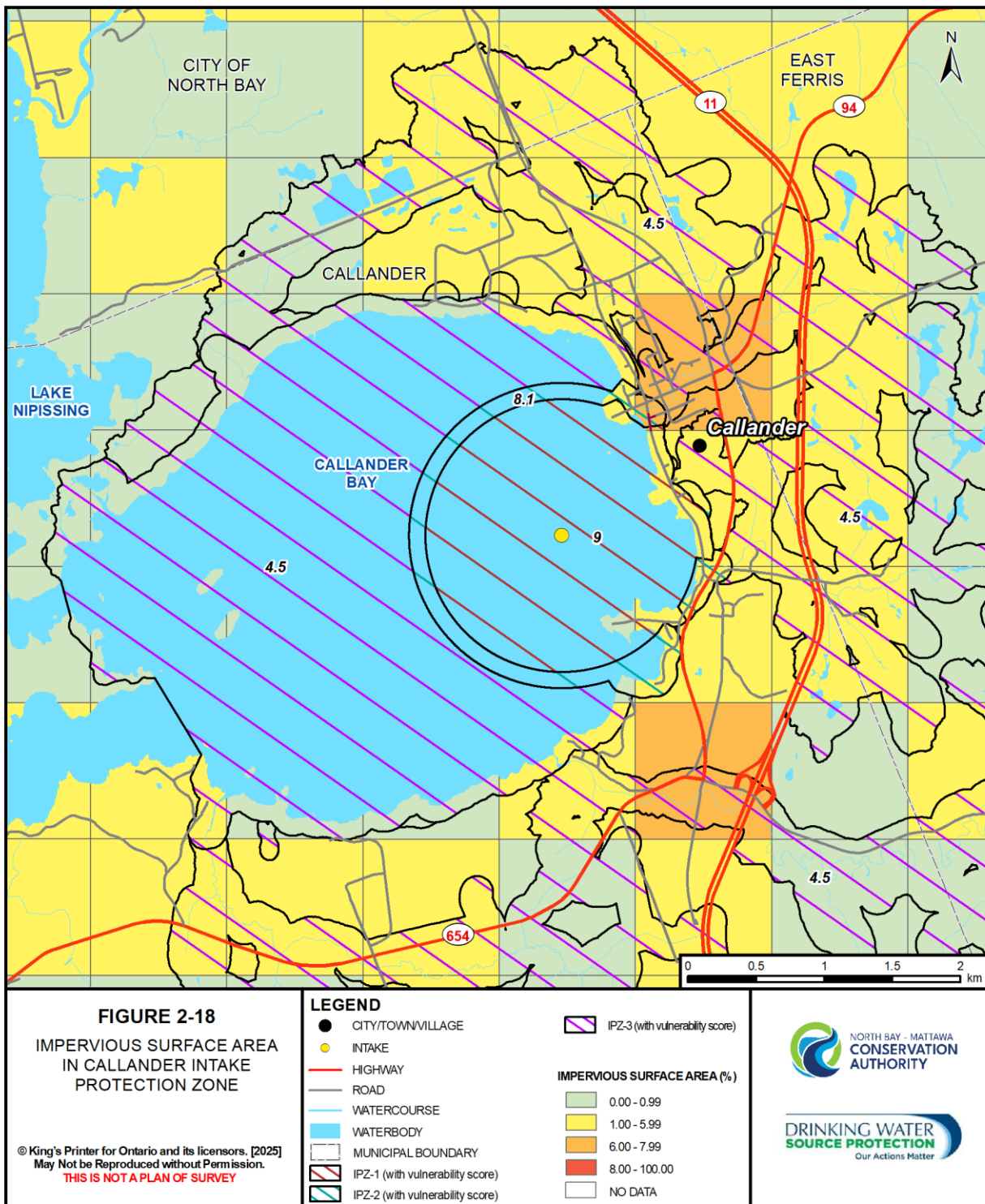
<b>Policy</b>	<b>Vulnerable Area</b>	<b>Description of Policy changes</b>
SAL2. Education: Road Salt Application	Callander IPZ-1, Mattawa WHPA-A, WHPA-B, Powassan WHPA-A, WHPA-B, South River IPZ-1	New policy
SAL3. Education: Road Salt Handling and Storage	Callander IPZ-1, Mattawa WHPA-A, WHPA-B, Powassan WHPA-A, WHPA-B, South River IPZ-1	New policy
SEW1. Prescribed Instruments: Prohibition of New Sewage Works and Review of Existing Sewage Works of Certain Types	Callander IPZ-1, IPZ-2, IPZ-ICA Mattawa WHPA-A, WHPA-B, North Bay IPZ-1 Powassan WHPA-A, WHPA-B, South River IPZ-1	Revised policy with changes to activities listed
SEW2. Prescribed Instruments: Management of Sewage Works of Certain Types	Callander IPZ-1, IPZ-2, IPZ-ICA Mattawa WHPA-A, WHPA-B, North Bay IPZ-1 Powassan WHPA-A, WHPA-B, South River IPZ-1	Revised policy with changes to activities listed
SMF1. Management of Threat Posed by Certain Nutrients as a Condition of Other Approvals	Callander IPZ-1, IPZ-2 Mattawa WHPA-A, WHPA-B, North Bay IPZ-1 Powassan WHPA-A, WHPA-B, South River IPZ-1	New Policy
SMF3. Municipal Action: Prohibit Application of Fertilizer to Land	Callander IPZ-1, IPZ-2 Mattawa WHPA-A, WHPA-B, Powassan WHPA-A, WHPA-B, South River IPZ-1	Revised policy (formerly SMF1. Municipal Action: Prohibit Land Application of Nutrients). Agriculturally based activities have been removed (see SMF4 below)

<b>Policy</b>	<b>Vulnerable Area</b>	<b>Description of Policy changes</b>
SMF4. Education: Management of ASM and Livestock Grazing Activity	Callander IPZ-1, IPZ-2, IPZ-ICA Mattawa WHPA-A, WHPA-B, North Bay IPZ-1 Powassan WHPA-A, WHPA-B, South River IPZ-1	New policy addressing the agriculturally based activities that were removed from former SMF1. Municipal Action: Prohibit Land Application of Nutrients policy
SNO1. Storage of Snow	Callander IPZ-1, IPZ-2 Mattawa WHPA-A, WHPA-B, North Bay IPZ-1 Powassan WHPA-A, WHPA-B, South River IPZ-1	This policy now applies to the Callander IPZ-2 and North Bay IPZ-1
SNO2. Education: Storage of Snow	Callander IPZ-1, IPZ-2 Mattawa WHPA-A, WHPA-B, North Bay IPZ-1 Powassan WHPA-A, WHPA-B, South River IPZ-1	New Policy
SVA1. Signage of Vulnerable Areas	Callander IPZ-1, IPZ-2 Mattawa WHPA-A, WHPA-B, North Bay IPZ-1 Powassan WHPA-A, WHPA-B, South River IPZ-1	Revised Policy to reflect ongoing nature of the program and that signs have been designed and installed
TPW1. Provide Notice of Transport Pathway	Callander IPZ-1, IPZ-2, IPZ-3, Mattawa, WHPA-A, WHPA-B, WHPA-C, WHPA-D, Powassan WHPA-A, WHPA-B, WHPA-C, WHPA-D, South River IPZ-1, IPZ-3	New Policy

<b>Policy</b>	<b>Vulnerable Area</b>	<b>Description of Policy changes</b>
WDS1. Prohibition and Management of Waste Disposal Sites under Part V of the EPA	Callander IPZ-1, IPZ-2, IPZ-ICA, Mattawa WHPA-A, WHPA-B, North Bay IPZ-1 Powassan WHPA-A, WHPA-B, South River IPZ-1	Revised policy with changes to activities listed
WDS2. Land Use Prohibition: Waste Disposal Sites	Callander IPZ-1, IPZ-2, IPZ-ICA, Mattawa WHPA-A, WHPA-B, North Bay IPZ-1 Powassan WHPA-A, WHPA-B, South River IPZ-1	Revised policy with changes to activities listed
WDS3. Education: Hazardous Waste and PCBs	Mattawa WHPA-A, WHPA-B	Revised policy with changes to activities listed



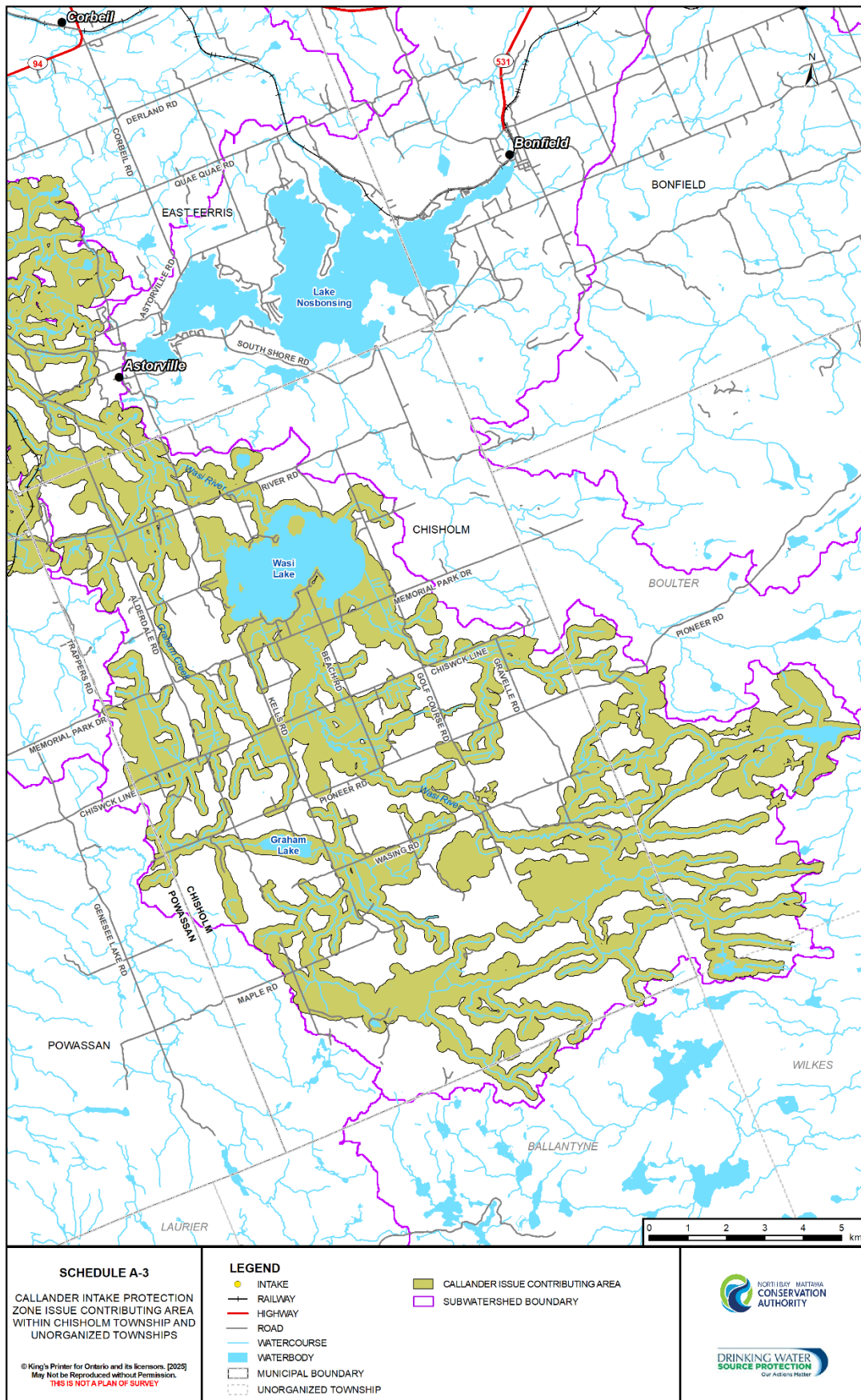


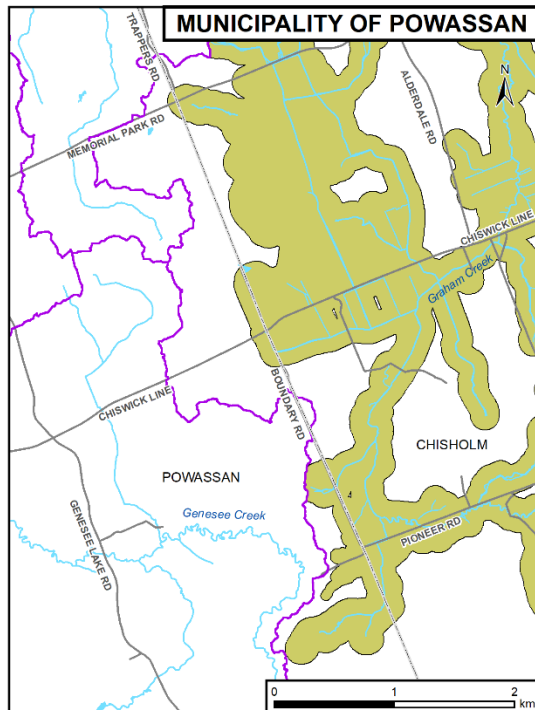
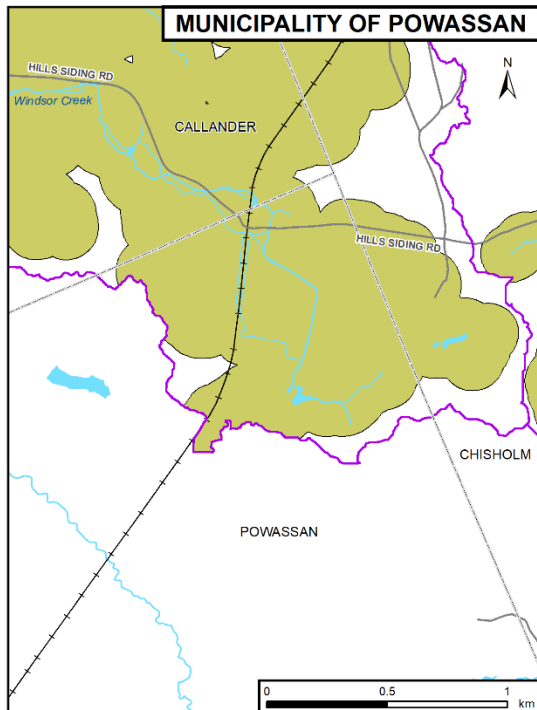
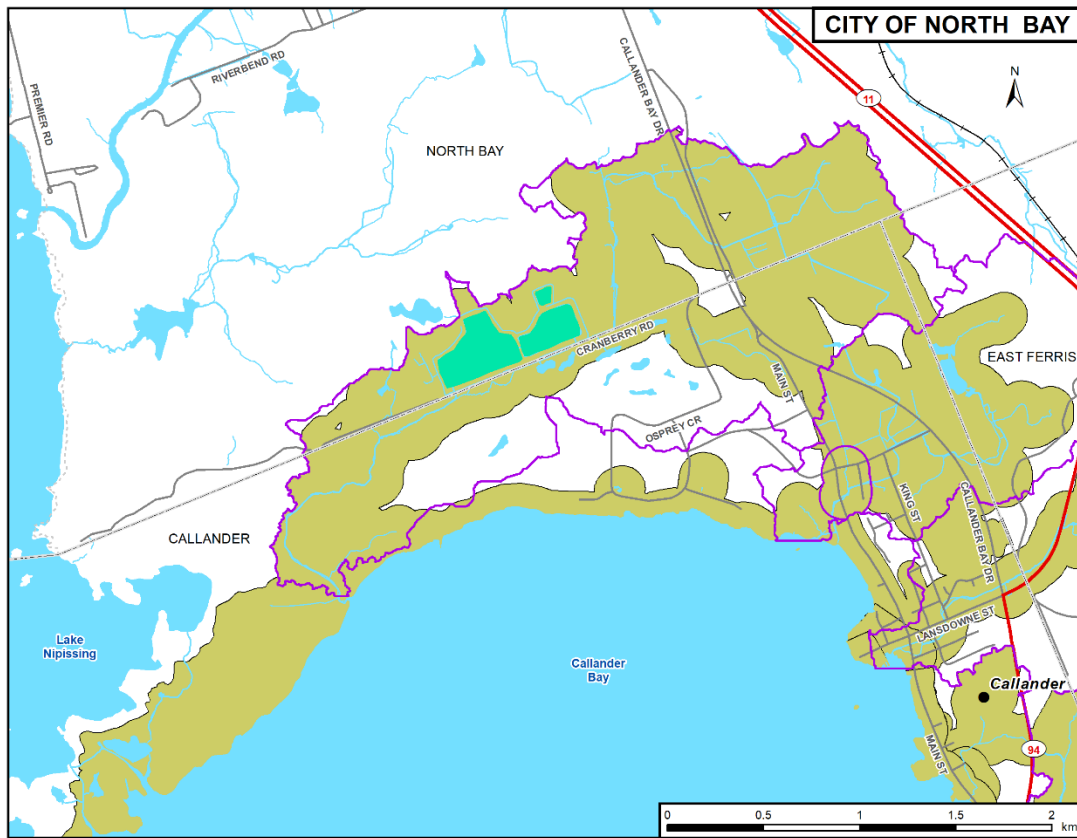












**SCHEDULE A-2**  
**CALLANDER INTAKE**  
**PROTECTION ZONE ISSUE**  
**CONTRIBUTING AREA WITHIN**  
**CITY OF NORTH BAY AND**  
**MUNICIPALITY OF POWASSAN**

© King's Printer for Ontario and its licensors, [2025]  
 May Not be Reproduced without Permission.  
 THIS IS NOT A PLAN OF SURVEY

**LEGEND**

- INTAKE
- RAILWAY
- HIGHWAY
- ROAD
- WATERCOURSE
- WATERBODY
- LAGOON
- CALLANDER ISSUE CONTRIBUTING AREA
- SUBWATERSHED BOUNDARY
- MUNICIPAL BOUNDARY
- UNORGANIZED TOWNSHIP



